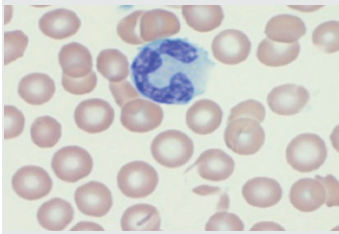
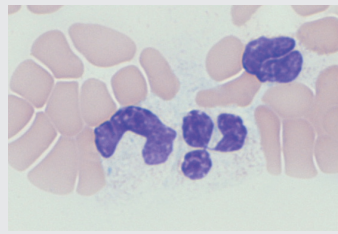


Hematology Atlas



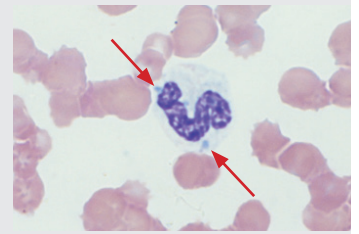
Canine Segmented (Mature) Neutrophil



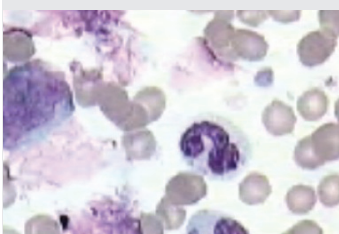
Canine Segmented (Mature) Neutrophils



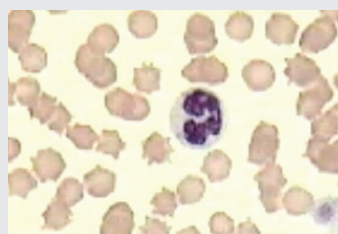
Canine Band Neutrophil



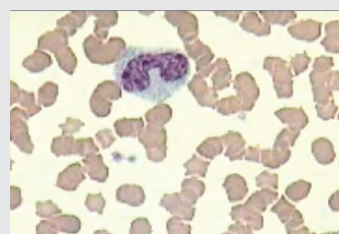
Canine Neutrophil with Döhle Bodies



Feline Segmented (Mature) Neutrophil



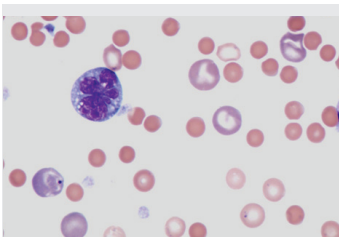
Feline Segmented (Mature) Neutrophils



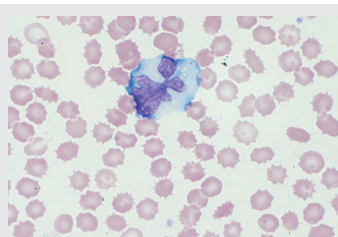
Feline Band Neutrophil



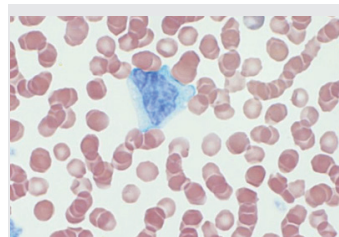
Feline Band Neutrophil with Döhle Body



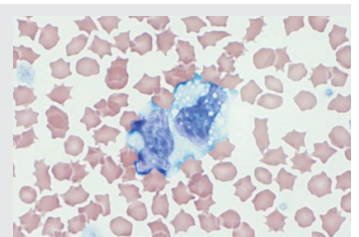
Canine Monocyte



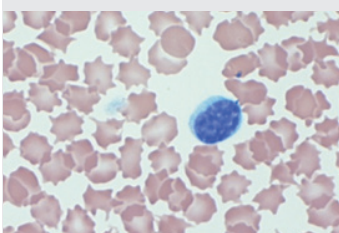
Canine Monocyte



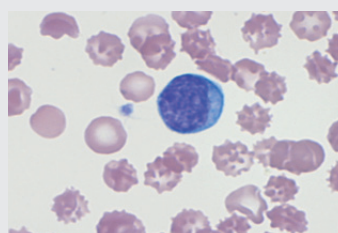
Feline Monocyte



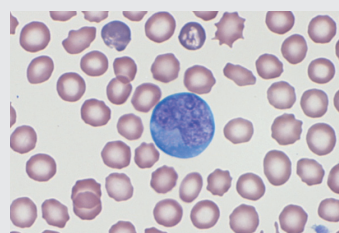
Feline Monocyte



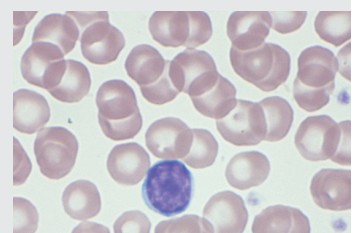
Canine Lymphocyte



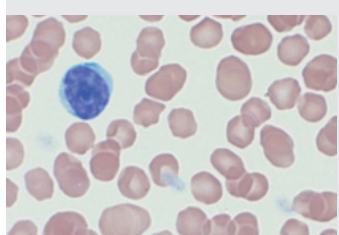
Canine Reactive Lymphocyte



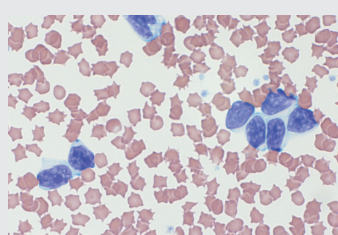
Canine Immunoblast



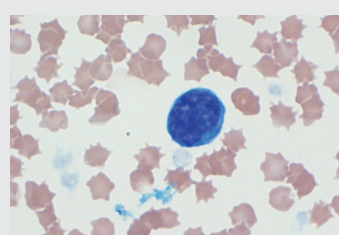
Canine Lymphocyte



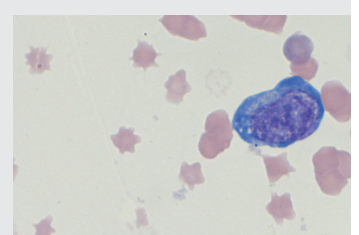
Feline Lymphocyte



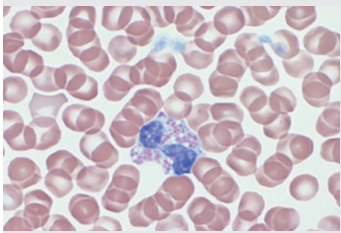
Feline Lymphocytes



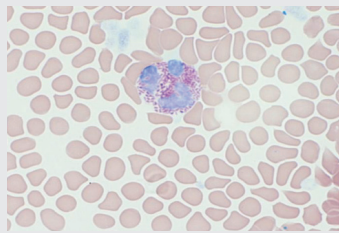
Feline Reactive Lymphocyte



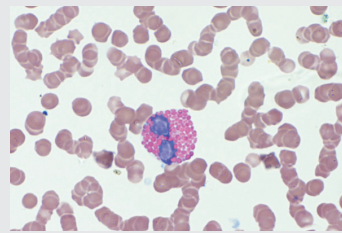
Feline Immunoblast



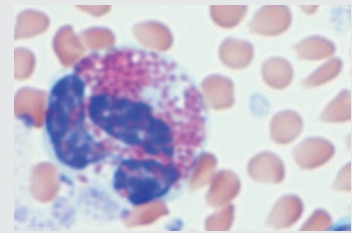
Canine Eosinophil



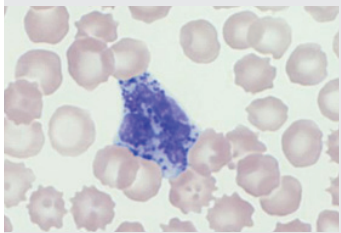
Feline Eosinophil



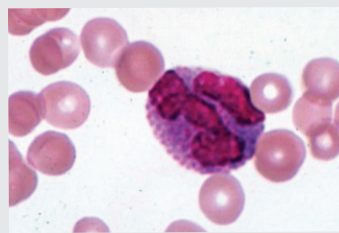
Equine Eosinophil



Caprine Eosinophil

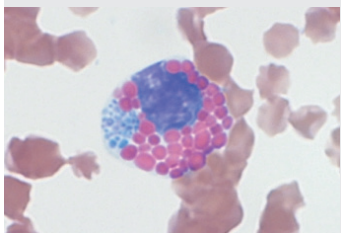


Canine Basophil

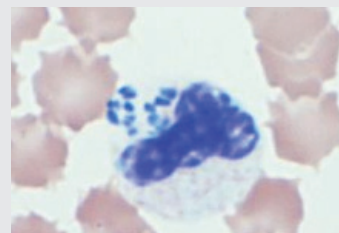


Feline Basophil

Pathologic Conditions



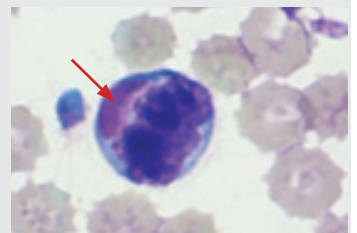
Equine eosinophil with Anaplasma phagocytophilum.



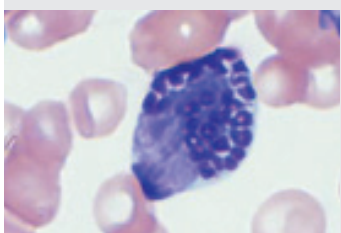
Canine neutrophil with Anaplasma phagocytophilum.



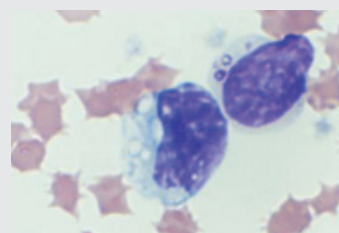
Canine distemper inclusion. Wright's stain. The inclusion stains pale blue.



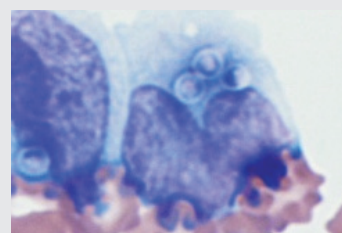
Canine distemper inclusion. Diff Quik stain. Inclusion stains pink.



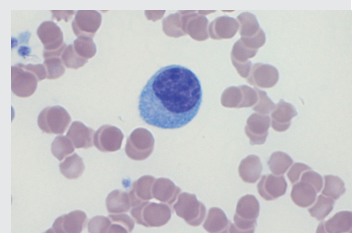
Canine blood, large granular lymphocytic leukemia. Granules are often surrounded by a vacuole.



Canine blood, large granular lymphocytic leukemia. Degranulation leaves only vacuoles in some cells.



Canine monocytes with budding Histoplasma capsulatum.



Feline plasma cell and RBC rouleaux. Plasma cell myeloma.



For further assistance, please call Heska's Technical Support Services at 800.464.3752, option 3.